

Kelba Shearbeam Loadcell Model: KA-10,000Z

General Specifications

Rated Capacity: 10,000kg
 Safe Load Limit: 15,000kg (static)

Construction: Tool Steel
 Protection: Electroplated zinc
 Cell Weight: 5.3kg

Electrical

Excitation Voltage: 5 - 15 V.D.C.
 Output at rated: 2.2mv/V +/- 0.5% capacity

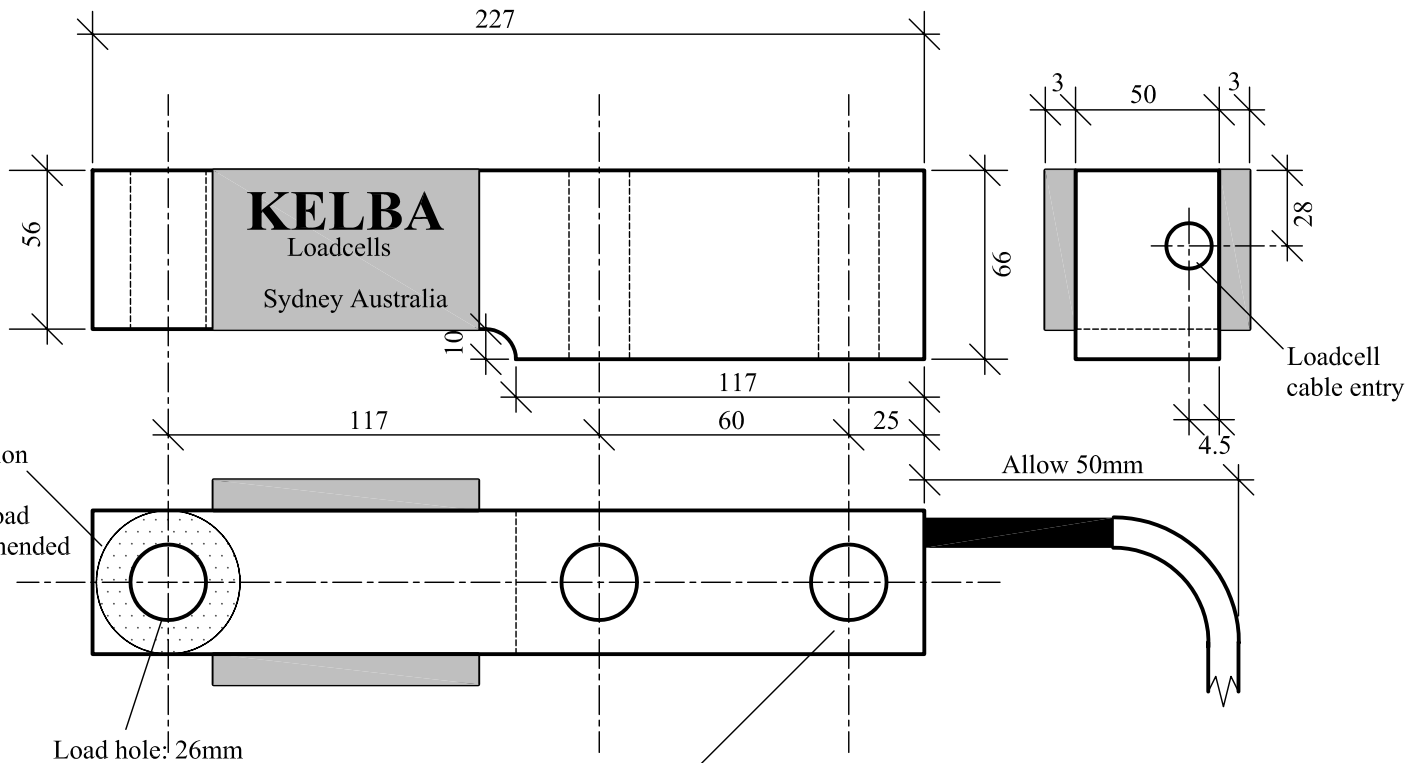
Cable length: 6000mm (std)
 Input impedance: 380 ohm +/- 6% (black to red)
 Output impedance: 350ohm +/- 0.2% (green to white)

Environmental Rating: IP67

* NOTE: Classified by Londonderry Occupational Safety Centre as a "Simple Device" and therefore suitable for hazardous and explosive dust environments subject to installation in compliance with the relevant Australian Standards.

Wiring colour code

| | |
|--------------|-------|
| Excitation + | Red |
| Excitation - | Black |
| Signal + | Green |
| Signal - | White |
| Shield | Bare |



Shaded section represents maximum load area recommended (50mm)

Load hole: 26mm

Mounting holes (2) drilled 26mm diameter - bolts to be 8.8 grade (min) hi-tensile socket head cap screw or hex head bolt.
 Bolt length: Sufficient to ensure a min. of 1.25 x bolt diameter into mounting base plate

Bolt Torque: 660 Nm
 487 ft lb
 (M24 x 3 CLASS 8.8 Grade to AS1110)

Mounting Accessories

- Mounting Kit KMA - 10,000 N
- Load Button see drg KLBM-25

Kelba (Australia) Pty Ltd

