

Model DBBP/DBBPU Series

S- Beam Load Cell (20kg ~ 5t)

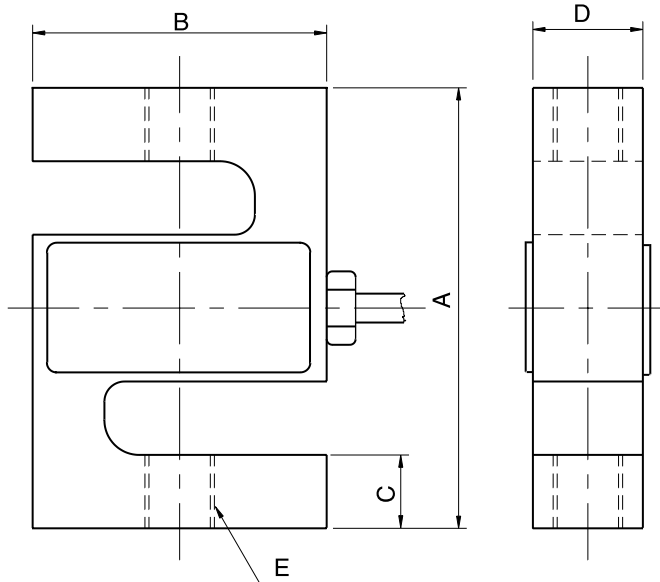


The DBBP S-beam load cell is designed for industrial scale conversion and a variety of process applications.

- Alloy tool steel construction for high accuracy.
- Electroless nickel plated for corrosion resistance.
- Fully sealed to IP67

SPECIFICATIONS

MODEL	DBBP, DBBPU
Rated capacity (R.C.)	20, 50, 100, 200, 500kg 1, 2, 3, 5t 50, 100, 200, 500 lbs 1k, 2k, 2.5k, 5k, 10k lbs
Rated output(R.O.)	3mV/V ± 0.5%
Non-linearity	≤ 0.03% R.O.
Hysteresis	≤ 0.03% R.O.
Non-repeatability	≤ 0.02% R.O.
Creep error	≤ 0.03% in 20min.
Zero balance	≤ 1% R.O.
Compensated temperature range	-10 ~ 70°C
Operating temperature range	-20 ~ 80°C
Temp. effect on rated output	≤ 0.03% LOAD/10°C
Temp. effect on zero balance	≤ 0.03% R.O./10°C
Terminal input resistance	350 Ohms ±3.5 Ohms
Terminal output resistance	350 Ohms ±5 Ohms
Insulation resistance (Min.)	2000 MOhms at 50V DC
Excitation voltage	10V(Recommended) /15V(Max.)
Electrical connection	ø5mmx3m(22AWG x 4Core Shielded)
Protection class	meets IP 67
Safe overload	150% R.C
Ultimate overload	300% R.C

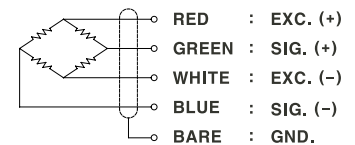


ORDERING INFORMATION

DBBP - 5T

MODEL	CAPACITY
DBBP	20, 50, 100, 200, 500kg, 1, 2, 3, 5t
DBBPU	50, 100, 200, 500lbs, 1, 2, 2.5, 5, 10klbs

WIRING INFORMATION



Dimension-mm(inch)

Model	Rated Capacity	A	B	C	D	E	Rod End Ball Joints	Weight(kg)
DBBP	20~100kg (196.1 ~ 980.7N)	63.5	50.8	10.4	12.7	M6x1P	SRDB 1	0.40
	200~500kg (1.96 ~ 4.90kN)	76.2	50.8	12.7	19.0	M12x1.75P	SRDB 2	0.55
	1t (9.807kN)	76.2	50.8	16.0	25.4	M12x1.75P	SRDB 2	0.73
	2t (19.61kN)	108.0	76.2	20.0	32.0	M20x1.5P	SRDB 3	1.70
	3~5t (29.42~49.03kN)	120.7	88.9	22.1	32.0	M24x2P	SRDB 4	2.10
DBBPU	50~200 lbs (222.4~889.7N)	(2.50)	(2.00)	(0.41)	(0.50)	1/4-28UNF	SRDBU 1	0.40
	500~1000 lbs (2.224 ~4.448kN)	(3.00)	(2.00)	(0.50)	(0.75)	1/2-20UNF	SRDBU 2	0.55
	2k~2.5k lbs (8.897~11.12kN)	(3.00)	(2.00)	(0.50)	(1.00)	1/2-20UNF	SRDBU 2	0.73
	5k lbs (22.24kN)	(4.25)	(3.00)	(0.75)	(1.00)	3/4-16UNF	SRDBU 3	1.70
	10k lbs (44.48kN)	(4.75)	(3.50)	(0.85)	(1.00)	3/4-16UNF	SRDBU 4	2.10

* Specifications are subject to change without notice

DEC, 2005